

The Hillside



ELEVATION 'A'

1563 SQ.FT.

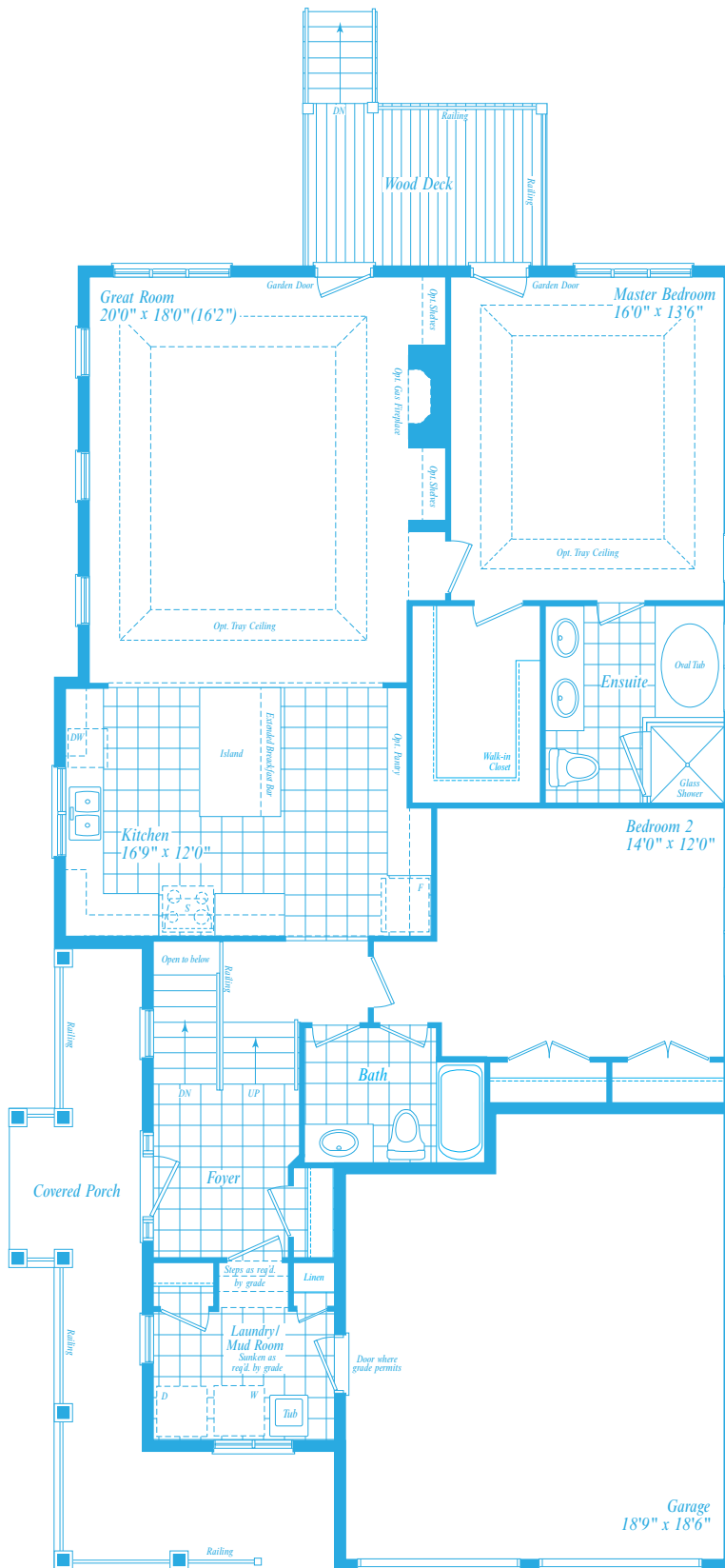
2066 SQ.FT. WITH OPT. LOFT



ELEVATION 'B'

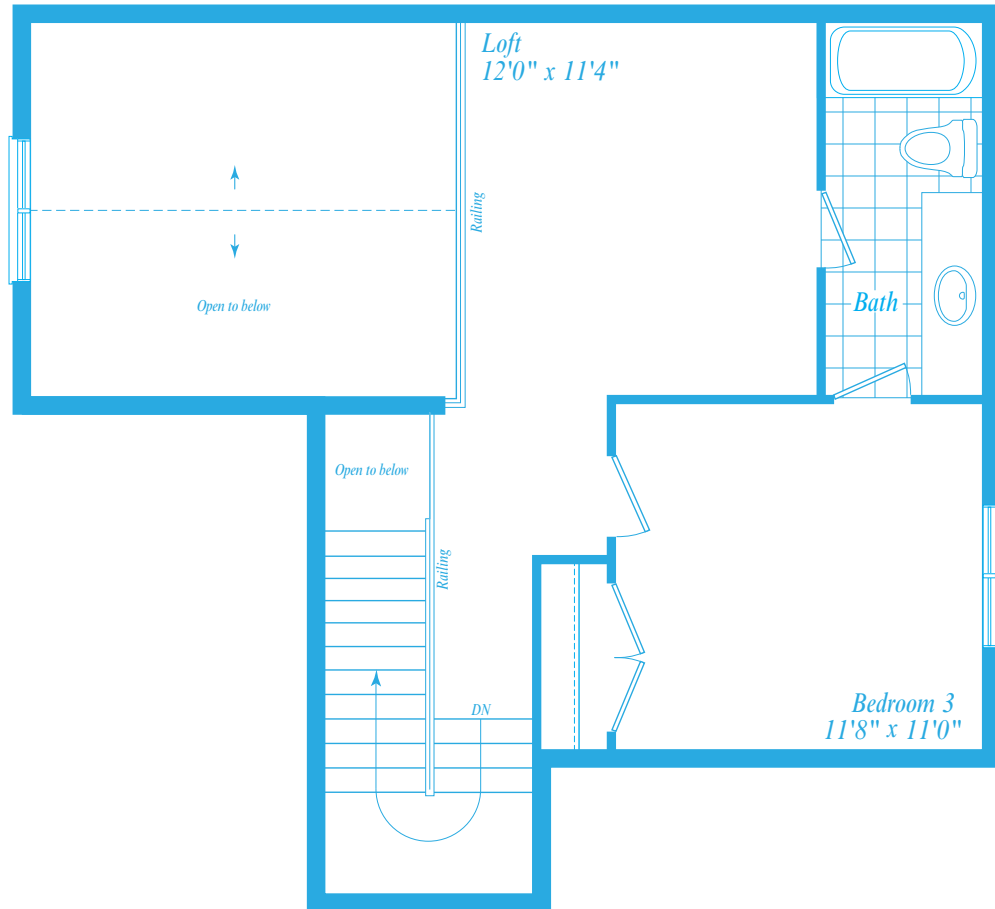
1563 SQ.FT.

2066 SQ.FT. WITH OPT. LOFT



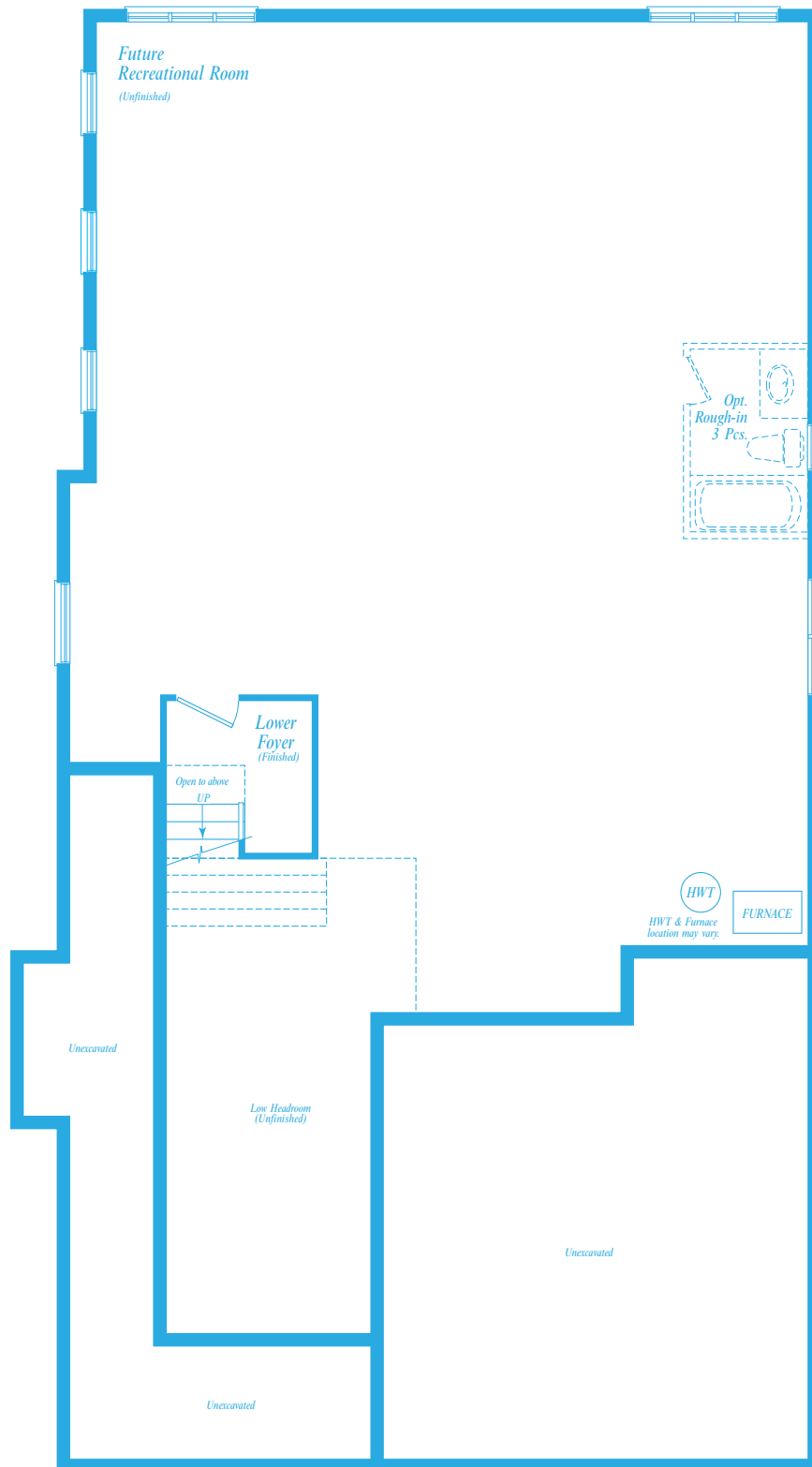
THE HILLSIDE - MAIN FLOOR - ELEVATION 'A'

ORIENTATION OF HOME MAY BE REVERSED. NUMBER OF STEPS MAY VARY AT ANY ENTRANCEWAY DUE TO GRADING VARIANCE. ACTUAL USABLE FLOOR SPACE MAY VARY FROM STATED AREA. DIMENSIONS, SPECIFICATIONS AND ARCHITECTURAL DETAILING ARE SUBJECT TO MINOR MODIFICATIONS. STRUCTURAL POSTS ARE NOT SHOWN IN LOWER LEVEL PLANS. FINISHED AREA IN LOWER LEVEL (IF ANY) IS INCLUDED IN QUOTED SQUARE FOOTAGE. ALL RENDERINGS ARE ARTIST'S CONCEPT. E. & O. E.



THE HILLSIDE - LOFT LEVEL - ELEVATION 'A'

ORIENTATION OF HOME MAY BE REVERSED. NUMBER OF STEPS MAY VARY AT ANY ENTRANCEWAY DUE TO GRADING VARIANCE. ACTUAL USABLE FLOOR SPACE MAY VARY FROM STATED AREA. DIMENSIONS, SPECIFICATIONS AND ARCHITECTURAL DETAILING ARE SUBJECT TO MINOR MODIFICATIONS. STRUCTURAL POSTS ARE NOT SHOWN IN LOWER LEVEL PLANS. FINISHED AREA IN LOWER LEVEL (IF ANY) IS INCLUDED IN QUOTED SQUARE FOOTAGE. ALL RENDERINGS ARE ARTIST'S CONCEPT. E. & O. E.



THE HILLSIDE - LOWER LEVEL - ELEVATION 'A'

ORIENTATION OF HOME MAY BE REVERSED. NUMBER OF STEPS MAY VARY AT ANY ENTRANCEWAY DUE TO GRADING VARIANCE. ACTUAL USABLE FLOOR SPACE MAY VARY FROM STATED AREA. DIMENSIONS, SPECIFICATIONS AND ARCHITECTURAL DETAILING ARE SUBJECT TO MINOR MODIFICATIONS. STRUCTURAL POSTS ARE NOT SHOWN IN LOWER LEVEL PLANS. FINISHED AREA IN LOWER LEVEL (IF ANY) IS INCLUDED IN QUOTED SQUARE FOOTAGE. ALL RENDERINGS ARE ARTIST'S CONCEPT. E. & O. E.